

Reporting and Support Options Following Sexual Violence



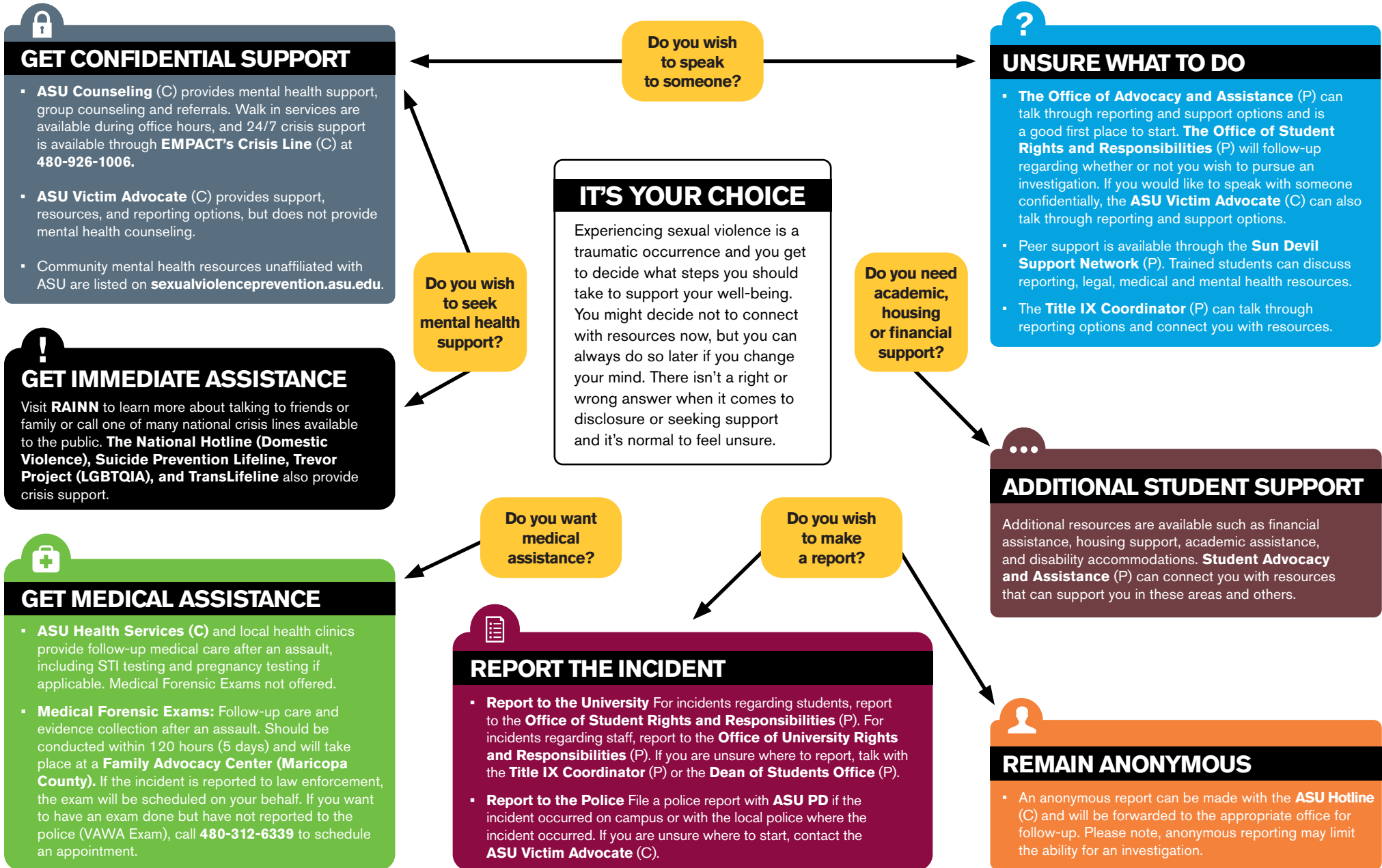
Following an experience of sexual violence, someone might be unsure of **where to start**. This chart provides information on the resources available.

Private resources (P) are mandatory reporters who will only share information with other offices involved in sexual violence response as needed or required by law.

Confidential resources (C) do not have a reporting responsibility and will not share information without your consent. Both private and confidential resources must act in a situation where there is an immediate threat to the health and safety of an individual or the community.

Find additional resources and learn more at: sexualviolenceprevention.asu.edu.

Visit counseling.asu.edu to learn more about counseling and crisis support. If you need immediate support, call EMPACT's 24-hour ASU-dedicated crisis hotline at 480-921-1006 or dial 911 for life-threatening emergencies.





Sexual Assault and Misconduct Resource Guide

sexualviolenceprevention.asu.edu

Arizona State University is committed to your health, safety and well-being

Sun Devils take care of themselves, each other and our community.

Sexual and relationship violence is widespread in society and has a profound impact on individuals and their communities. It takes a community of care to support victims and survivors, and ASU provides a variety of reporting options, resources and educational programs to prevent sexual misconduct.

ASU takes all reports of such conduct seriously and is committed to taking appropriate action to hold violators accountable and to prevent any recurrence. In order to ensure all members of our community have access to **health and safety resources** should an incident occur, all ASU employees are **mandatory reporters** and must report allegations of sexual assault/harassment.

We work continuously to improve prevention, response, support and investigation of sexual harassment, sexual assault and other forms of sexual violence. By challenging each and every member of our community to **take action** to prevent this from occurring, we can create a safe and healthy campus environment free of violence.

If an incident of sexual misconduct or sexual or relationship violence occurs, options to **report the incident**, **receive confidential support** and to get **immediate assistance** are available through on-campus and off-campus resources. This brochure provides more information about options available.

For more information, visit **sexualviolenceprevention.asu.edu**.



Place more reporting power in the palm of your hand.
Download the free ASU LiveSafe Mobile App.

Information is subject to change. ASU is an affirmative action/equal opportunity institution. For ASU's discrimination complaint procedures, visit asu.edu/titleIX. ©2022 Arizona Board of Regents for ASU. To request this publication in alternative formats, contact Educational Outreach and Student Services at 480-965-2200 (Fax 480-965-3080). Published August 2022.

Title IX of the Education Amendments of 1972 protects individuals from discrimination based on sex in any educational program or activity operated by recipients of federal financial assistance. As required by Title IX, ASU does not discriminate on the basis of sex in the education programs or activities that we operate, including in admission and employment. Inquiries concerning the application of Title IX may be referred to the Title IX Coordinator or to the U.S. Department of Education, Assistant Secretary, or both.



Report the Incident

There are multiple options available to you for making a sexual misconduct report.

Student Advocacy and Assistance (SAA)

Student Advocacy and Assistance guides students in resolving educational, personal and other campus impediments toward successful completion of their academic goals. Please note that Student Advocacy and Assistance is not a confidential resource.

Support services are provided by Student Advocacy and Assistance, which can include:

1. assistance with absence letters, attendance and enrollment options
2. advocacy for changes in on-campus living arrangements
3. referrals to campus and community resources

For support, submit a Student Care Form by visiting links.asu.edu/StudentAdvocacy or call **(480) 965-6547**.

Student Rights and Responsibilities (SRR)

ASU Dean of Students and Student Rights and Responsibilities follows up on all reports of sexual misconduct involving students. As needed, an investigator will recommend temporary actions which may include academic adjustments, room assignment changes, no contact orders and counseling services.

The investigation process includes interviews and a collection of relevant evidence. Both the complainant and respondent will be notified of investigation results which includes responsibility and sanctions. If expulsion or suspension is decided, both parties have the right to appeal.

For more information or to report an incident visit links.asu.edu/ReportForm or call **(480) 965-9170**.

Please note

Reporting to SSR or ASU Office of University Rights and Responsibilities can be done in addition to reporting to the police for criminal prosecution.

ASU Police or Local Police

Filing a police report does not obligate a victim to press charges against an assailant. ASU Police can assist with activation of services, connection to local police and support to both on-campus and off-campus incidents.

A report to ASU Police or local police begins with an initial interview. Additionally, a referral to university or community resources may be provided. An investigation includes a forensic exam, witness statement and evidence collection. Prosecution includes a preliminary hearing, court date and verdict.

- **In case of emergency: 9-1-1**
- **ASU Police:**
480-965-3456
- **Glendale Police Department:**
623-930-3000
- **Lake Havasu Police Department:**
928-855-4111
- **Mesa Police Department:**
480-644-2030
- **Phoenix Police Department:**
602-262-7626
- **Tempe Police Department:**
480-350-8311

The Office of University Rights and Responsibilities (URR)

Any incident that involves a faculty or staff member should be reported through the Office of University Rights and Responsibilities.

For more information, email urr@asu.edu or call **480-965-5057**.

A report to URR begins with an initial interview. While under review, URR may implement interim measures which could include work assignment or location adjustments, no contact orders and counseling.

After an investigation, the Office of University Rights and Responsibilities will issue findings of fact to the appropriate senior leader who will accept or reject the factual findings and the final determination is then issued.

Title IX Formal Complaints

To file a formal complaint alleging Title IX Sexual Harassment, you can submit a written document with your signature to TitleIXCoordinator@asu.edu or request an appointment with the Title IX Coordinator in person by emailing the same address. You will be contacted to verify your intent to initiate a formal complaint as well as review P20a: Title IX Formal Complaint Grievance Process. You can receive supportive measures, whether or not you decide to file a Title IX Formal Complaint. For student supportive measures please contact Student Advocacy and Assistance (**480-965-6547**)



Get Confidential Support

Sexual misconduct is a complex and painful experience that often requires a combination of legal, medical, psychological and academic support. You may wish to have a confidential conversation about your options and what steps you would like to take next. There are resources both on and off-campus for you to get **confidential support**.

ASU Counseling Services

ASU Counseling Services offers confidential one-on-one counseling and crisis services for students. Students can be seen within the same day if needed. After-hours services are provided through EMPACT, the 24-hour hotline **480-921-1006**. For more information, visit **eoss.asu.edu/counseling** or call **480-965-6146** to schedule an appointment.

Sexual and Relationship Violence Program

The ASU Sexual and Relationship Violence Program offers Victim-Survivor Services, where Victim-Survivor Advocates can provide confidential support, resource referral and explain reporting options for students, faculty and staff. Victim-Survivor Advocates are not a part of the police department and are available to meet anywhere on campus, over the phone or virtually. For more information, visit **links.asu.edu/victimservices**, email **victimservices@asu.edu** or call **480-965-0107**. Victim-Survivor Services is available Monday through Friday, 8 a.m. – 5 p.m.

Employee Assistance Office (EAO)

The EAO offers free, voluntary and confidential behavioral health and organizational consultation for personal and work-related issues. This service is for faculty and staff. For more information, visit **cfo.asu.edu/eao-wellness** or call **480-965-2271**.

National Hotlines and Websites

National Sexual Assault Hotline: Access free, 24/7 local crisis support online or by calling **800-656-HOPE (4673)**. For more information, visit **ohl.rainn.org/online**.

National Domestic Violence Hotline: Advocates are available 24/7 by calling **800-799-SAFE (7233)** or online at **thehotline.org/help**.

ASU Health Services

Health Services can provide follow-up care as well as testing for pregnancy and STIs. For more information, visit **eoss.asu.edu/health** or call **480-965-3349**.

Remain Anonymous

Any member of the ASU community or the community at large can report incidents anonymously through the **ASU Hotline.** Please note this is **NOT** an emergency line or 9-1-1. Emergencies should be reported directly to 9-1-1, ASU or local police.

Reports received through the hotline will be sent to the appropriate office for investigation and follow-up. Complaints that involve students will be sent to **Student Rights and Responsibilities**. Complaints that involve faculty or staff members will be sent to the **Office of University Rights and Responsibilities**. Please note: anonymous reporting will limit the ability to investigate. For more information, visit audit.asu.edu/asu-hotline or call **1-877-SUN-DEVL (786-3385)**.

Unsure What To Do

If you are uncertain about your next step, the resources below can talk with you about your options. Victim-Survivor Services with the Sexual and Relationship Violence Program (SRVP) is a confidential option for those who are unsure what resources are available to them.

Student Advocacy and Assistance

For support, submit a Student Care Form by visiting links.asu.edu/StudentAdvocacy or call **(480) 965-6547**.

Sun Devil Support Network (SDSN)

Sun Devil Support Network Advisors offer peer-level support by helping to cultivate healthy relationships and connecting victims and survivors to resources. For more information, visit eoss.asu.edu/sdsn.

Title IX Coordinator and Special Counsel

The Title IX Coordinator has oversight of the grievance procedure for all complaints by or against ASU students, student athletes, faculty, staff and visitors. For more information about Title IX, visit asu.edu/titleIX, call **480-965-0696**, or email TitleIXCoordinator@asu.edu.

Sexual and Relationship Violence Program

Confidential Victim-Survivor Advocates can discuss reporting and support options for students, faculty, and staff. For more information, visit links.asu.edu/victimservices, email victimservices@asu.edu or call **480-965-0107**. Advocates are available Monday through Friday, 8 a.m. – 5 .pm.

Get Medical Assistance

For your health and protection, it is important to be examined by a medical professional for possible injuries, sexually transmitted infections or pregnancy. This can be done at a Family Advocacy Center as part of a forensic exam, through your primary healthcare provider, at a local hospital or through ASU Health Services.

ASU Health Services*

Health Services can provide follow-up care as well as testing for pregnancy and STIs. ASU Health Services does not provide medical forensic examinations. For more information, visit eoss.asu.edu/health or call one of the following locations:

- Downtown Phoenix: 602-496-0721
- Tempe: 480-965-3349
- Polytechnic: 480-727-1500
- West: 602-543-8019

Medical Forensic Exam

In Maricopa County, Honor **Health Forensic Nurse Examiner Program** provides medical forensic exams at Family Advocacy Centers (FAC). Exams are not offered at hospitals except for in the case of a medical emergency. When reporting to law enforcement, if you choose to have an exam it will be scheduled on your behalf and transportation may be provided to the FAC. Individuals who want a forensic exam in Maricopa County but do not want to report the incident to law enforcement can call HonorHealth at **480-312-6339** to request an exam. You will need to leave a message and a nurse will call you back. Please note that these centers are not open 24 hours and should be contacted prior to visiting.

- Mesa Center Against Family Violence
480-644-4075
- Phoenix Family Advocacy Center:
602-534-2120
- Scottsdale Family Advocacy
Center: 480-312-6340
- Glendale Family Advocacy
Center: 623-930-3720

If outside Maricopa County, view the **Arizona Coalition to End Sexual and Domestic Violence (ACESDV)** website to review medical forensic exam facilities in Arizona.

If outside of Arizona but within the United States, **RAINN** has a search tool to help you identify sexual assault service providers in your state. Find services at centers.rainn.org.

* All on-campus students can receive services at any Phoenix Metropolitan location.

ASU Online Resources

Take a moment to review the resources available to ASU Online students who experience sexual or relationship violence.

360 Life Services

ASU Online students who experience sexual or relationship violence have access to a variety of resources in-person and online. To connect with resources exclusively for ASU Online students, visit the **360 Life Services** portal through My ASU → Resources → Student Success → and Support → 360 Life Services.

360 Life Services is a comprehensive support program that offers 24/7 counseling and crisis intervention via telephone or in-person as well as access to chat with topic specialists in legal, personal finance, childcare, education and more, when it's convenient for you. This confidential resource is provided to support your education, career, and personal needs.

Reporting Sexual and Domestic Violence to Law Enforcement

If you or someone you know would like to report an incident of sexual or domestic violence to law enforcement, you should connect with the police department in the jurisdiction where the incident occurred. **RAINN** has information about what to expect when reporting through the **United States criminal justice system**. If the incident occurred on ASU campus, you may report to the **ASU Police**.

If the incident did not occur on ASU's campus, the **ASU police** are not able to respond to the incident. However, the **ASU Victim-Survivor Advocate** is a confidential resource that can support you in connecting with local reporting and support options in Arizona and beyond.

The **ASU Office of Student Advocacy and Assistance** can also connect you with resources should you experience sexual or domestic violence.

Medical Care and Forensic Medical Exams

If you would like to seek medical support in the United States following a sexual assault, you have the option of having a free forensic medical exam to collect evidence and treat any immediate health concerns. You do not have to file a police report in order to have a forensic medical exam. Every state has different laws on how long they need to keep evidence from a forensic medical exam and how long you have to report the assault after it occurs. For more information on a Forensic Medical Exam, visit the **Rape, Abuse & Incest National Network (RAINN)**.

If you need assistance locating the Rape Crisis Center closest to you that provides forensic medical exams in the United States, visit **RAINN's searchable database** or call RAINN 24/7 at **1-800-656-HOPE (4763)** 24/7 or visit the **online chat**.

While healthcare providers in most states do not provide forensic medical exams, they can assist you in treating your healthcare needs following experiences of sexual or domestic violence.

Inappropriate Conduct in Online Courses

ASU Online students are held to the same standards. They must comply with the **Student Code of Conduct** as well as university policies prohibiting discrimination, harassment and retaliation and are held accountable for actions that violate this policy no matter where they physically reside.

If you experience sexual misconduct, discrimination, harassment or retaliation within an online classroom, you can find out where to report it at **asu.edu/reportit** and can seek additional support services through the aforementioned resources.



ASU Local and ASU at Lake Havasu Resources

Review local resources that are available to ASU students attending classes at **ASU at Lake Havasu** or **ASU Local** campuses in Yuma, Los Angeles and Washington DC.

Lake Havasu

Haven Family Resource Center

928-505-3153

HAVEN is a fully accredited family advocacy center serving all people in crisis situations including victims of crimes.

Lake Havasu City Police Department

928-955-1171

*Call 911 in the event of an emergency

Los Angeles

Rape Treatment Center at UCLA (Santa Monica)

424-259-7208

The Rape Treatment Center provides comprehensive services for sexual assault victims – adults and children – 24 hours a day, including specialized medical care, forensic services, counseling, and information about rights and options.

Santa Monica Police Department

310-395-9931

*Call 911 in the event of an emergency

Los Angeles Police Department

877-ASK-LAPD

*Call 911 in the event of an emergency

Los Angeles (continued)

Peace Over Violence

Peace Over Violence is a nonprofit 501c3, multicultural, community based and volunteer centered organization dedicated to building healthy relationships, families and communities free from sexual, domestic and interpersonal violence.

Washington DC

DC Rape Crisis Center (DCRCC)

202-866-0501

24-Hour Crisis Line: 202-233-RAPE

DCRCC is the designated State Sexual Assault Coalition for the District of Columbia providing survivor-centered advocacy through therapeutic services, training and technical assistance, community education, public policy initiatives as well as volunteer opportunities.

Washington DC (continued)

Network for Victim Recovery of DC (NVDC)

202-742-1727

***DC Victim Hotline: 1-844-4HELPDC (844-443-5732)**

***Call this number to connect with an advocate regarding a forensic medical exam.**

The Network for Victim Recovery of DC (NVRDC) provides free, holistic, and comprehensive case management and legal services to victims of all types of crime regardless of income.

The Women's Center

202-293-4580

The Women's Center provides mental health counseling, support, and education to the metropolitan area to help people live healthy, stable, and productive lives.

Metropolitan Police Department (DC)

202-727-9099

***Call 911 in the event of an emergency**

Yuma

Amberly's Place

(928) 373-0849 (24hr Helpline)

Amberly's place is a Family Advocacy Center serving victims and survivors of domestic violence, sexual abuse, sexual assault and elder abuse in Yuma County, Arizona.

Yuma Police Department

(928) 373-4700

***Call 911 in the event of an emergency**

Relevant ASU Policies as Defined by the Arizona Board of Regents

“Consent” in the context of sexual activity means informed and freely given words or actions that indicate a willingness to participate in mutually agreed upon sexual activity.

Consent may not be inferred from:

1. silence, passivity or lack of resistance
2. a current or previous dating or sexual relationship
3. acceptance or provision of gifts, meals, drinks, or other items or
4. previous consent to sexual activity.

Consent may be withdrawn during sexual activity, consent to one form of consensual sexual activity does not imply consent to any other form of sexual activity. Consent may not be obtained through physical force, violence, duress, intimidation, coercion, or an expressed or implied threat of injury. Consent may never be given by a person who is: incapacitated (by drugs, alcohol or otherwise), unconscious, asleep, or otherwise physically or mentally unable to make informed, rational judgments. The use of alcohol or drugs does not diminish one’s responsibility to obtain consent and does not excuse conduct that violates this Student Code of Conduct.

“Sexual misconduct” means one or more of the following:

- a. Sexual violence and other non-consensual sexual contact – actual

or attempted physical sexual acts perpetrated against a person by force or without consent; or

- b. Sexual harassment – unwelcome conduct of a sexual nature that is sufficiently severe or pervasive as to create an intimidating, hostile, or offensive environment; or
- c. Other unwanted or non-consensual sexual conduct including but not limited to indecent exposure, sexual exploitation or voyeurism, or non-consensual photographing or audio-recording or video-recording of another in a state of full or partial undress or while engaged in sexual activity, or publishing or disseminating such materials.

Sexual misconduct also includes any other student code of conduct violations related to domestic or dating violence.

“Stalking” means engaging in a course of conduct that is directed toward another person if that conduct would cause a reasonable person to suffer substantial emotional distress or to fear for the person’s safety or the safety of that person’s immediate family member or close acquaintance, and that person in fact fears for his/ her safety.

For more information, visit

sexualviolenceprevention.asu.edu/policies.



ASU Victim-Survivor Services

Sexual and Relationship Violence Program

If you have experienced or witnessed any form of violence or have been a victim of another crime, you are not alone. Support is available.

Contact a Victim-Survivor Advocate through the Sexual and Relationship Violence Program for free and confidential support.

A Victim-Survivor Advocate can guide you through criminal justice system procedures, provide campus and community referrals and explain your reporting options.

Contact ASU Victim-Survivor Services:
480-965-0107
victimservices@asu.edu

If you are in crisis and need immediate support, call ASU's dedicated mental health line through EMPACT 480-921-1006. If you or someone you know is experiencing a life-threatening emergency or are in immediate suicide crisis, call 911.



ASU Victim-Survivor Services

All ASU students, faculty and staff may request assistance and support related to:

- Campus and community resources and referrals.
- Emotional support.
- Individual and workplace safety plans.
- Criminal justice system guidance.
 - Criminal prosecution assistance and accompaniment.
 - Order of Protection or Injunction Against Harassment.
 - Victims' Rights education and compensation claims.

Email victimservices@asu.edu or call **480-965-0107** to schedule an appointment with a Victim-Survivor Advocate. Victim-Survivor Advocates can meet victims and survivors at ASU's Downtown Phoenix, Polytechnic, Tempe or West campuses, and are available through a video or phone call.

Mental health support is also available at ASU Counseling through on-campus appointments and Open Call and Open Chat (24/7 text or video counseling). For more information, visit eoss.asu.edu/counseling.



Formal Complaint of Title IX Sexual Harassment

Title IX Sexual Harassment includes the following conduct that occurs in the United States and in an ASU program or activity:

- Sexual assault
- Dating and Domestic Violence
- Stalking
- Severe, Pervasive and Offensive Conduct

BOTH parties have a right to:

- Immediately receive notice of the facts and allegations
- Gather and present evidence to an investigator
- Receive and review all evidence gathered during the investigation
- Receive a copy of the draft investigative report
- Attend a live hearing
- Have an advisor who will cross examine all witnesses
- Appeal a determination

A formal complaint must be filed in writing with your signature. You can submit a formal complaint or request an in-person meeting at TitleIXCoordinator@asu.edu.



ASU has a variety of other reporting and support options available.

To discuss **reporting** and support options, connect with **ASU Advocacy and Assistance** deanofstudents@asu.edu 480-965-6547

You do NOT need to file a report or complaint to receive resources.



Report of Sexual Harassment

Student Code of Conduct Sexual Harassment includes the following conduct, no matter where it occurs:

- Sexual violence including non-consensual sexual contact which can lead to discipline for acts occurring outside the United States or an ASU program or activity
- Unwelcome conduct of a sexual nature that is severe or pervasive
- Indecent exposure, exploitation or voyeurism
- Endangering, threatening or causing physical harm

BOTH parties have a right to:

- Gather and present evidence to an investigator
- Receive and review relevant evidence gathered during the investigation
- Have an advisor of their choice
- Appeal a determination of suspension or expulsion

A report of Student Code of Conduct sexual harassment by a student can be filed with the Dean of Students office on any ASU campus or by **filing a report online**.



Confidential Support Options Include:

ASU Counseling Services
480-965-6146

- ASU Health Services**
- Downtown 602-496-0721
 - Polytechnic 480-727-1500
 - Tempe 480-965-3349
 - West 602-543-8019

ASU Victim Services
480-965-0107

Find resources and learn more at sexualviolenceprevention.asu.edu

Reporting to the university is not the same as filing a criminal complaint with a police department. If you would like to have a confidential conversation about the criminal process, including protection orders, confrontation calls and preserving evidence, including medical exams, please contact the **ASU Victim Services** at 480-965-0107.

Medical Forensic Exam Resource Guide

The content for this guide has been provided by the [HonorHealth Forensic Nurse Examiner Program](#). HonorHealth is the provider for Medical Forensic Exams in Maricopa County. While most of the information regarding the exam is applicable to all regardless of where they experienced violence, the contact information in this resource guide is specific to Maricopa County. The [Arizona Coalition to End Sexual and Domestic Violence](#) provides a list of [medical forensic exam facilities](#) in Arizona. If you are outside of Arizona, the [Rape, Abuse & Incest National Network \(RAINN\)](#) provides a [tool](#) to identify sexual assault service providers in your state.

What is a medical forensic exam?

Medical forensic exams address health and safety issues and are used to collect any potential evidence from an assault. You have the right to receive an exam **within five days** of your assault.*

Exam location

Exams are usually done in an [advocacy center](#) in a private, quiet location. There are several advocacy centers located throughout Maricopa County. You can request to have an exam at a center convenient for you. If you have a medical emergency and need to go to the hospital, your exam may be performed by a forensic nurse in the hospital. There is no cost for this exam. (States and counties vary in where the exam will be done.) Medical forensic exams are not available at ASU Health Services.

What should I do if I want a medical forensic exam?

If you want to file a police report about your assault, please call 9-1-1 and the police will contact a forensic nurse to help you schedule an exam. If the assault occurred on campus, [ASU Police](#) will respond and take your report. You can also call the non-emergency line [480-965-3456](#).

You will also be connected with a confidential [Victim Advocate](#) who can provide more information on the reporting and support options. If the assault took place off campus, you can connect with local law enforcement for the city you were in.

* Amount of time may vary by state and county.

What if I do not want to call the police?

If you do not want to file a police report, call the [HonorHealth Forensic Nursing Department](#) at [480-312-6339](#) (available 24/7) and enter a call back number. A nurse will call you back soon after. You do not need to file a report to receive medical care.

Is there anything I need to do to prepare for the exam?

Please avoid:

- Showering
- Using the bathroom
- Eating and drinking
- Smoking

Even if you did any of the above activities, **you can still have an exam**. Also, make sure you bring the clothing worn during your assault.

What can I expect during the exam?

A forensic nurse will ask about your medical history and details of your assault, which will help them discuss exam and treatment options with you. You can still have an exam even if you do not remember the details of your assault. Someone will work with you and connect you to the resources that you need.

Physical exam

Your nurse will do a physical exam, which is more detailed than a routine exam from your doctor. They will document and photograph any injuries you have. If you have been sexually assaulted, your nurse may do a pelvic or genital exam.

Evidence collection

Your nurse will collect evidence during the physical exam, including:

- Clothing and underwear worn during the assault
- Blood
- Urine
- Swabs from your body

Medical Forensic Exam Resource Guide

Treatment

Your nurse will talk to you about medications to prevent sexually transmitted infections/diseases (STIs/STDs) and pregnancy.

You will not be tested for STIs/STDs during your exam.

Follow-up care can be done at **ASU Health Services**, in a Community Health clinic, or at your Primary Care physician's office.

What can I expect after the exam?

After your exam, your nurse will give you information about medical care, counseling, safety planning and anything else you need for your physical and mental health, and safety.

ASU Counseling is available for ASU immersion students and **360 Life Services** is available for ASU Online students.

There is no cost for this exam.

Remember: You are in control of the exam. You have the right to say “Yes” or “No” at any point.

Your safety and comfort are important, and your nurse wants to help you feel as safe and comfortable as possible during your exam.

Find resources and learn more at sexualviolenceprevention.asu.edu.

Evidence and kit

After your exam, your nurse will prepare and store your kit in a secure location. If you have filed a police report, your nurse will work with the police to have your kit sent to the crime lab. Your exam report will be used for the investigation. Someone from the police department will follow up with you about the results of your kit. If you choose not to file a police report, your evidence will not be sent to the police. It will be stored for **at least 90 days** in case you decide to file a police report later.*

For more information about the HonorHealth Forensic Nurse Examiner Program, call **480-312-6340**, 8 a.m.–5 p.m. Monday-Friday. To get a medical forensic exam without filing a police report, call **480-312-6339**, 24/7.

* Amount of time may vary by state and county.

IF AN INCIDENT OF SEXUAL MISCONDUCT/SEXUAL VIOLENCE OCCURS



THE FOLLOWING OPTIONS AND RESOURCES ARE AVAILABLE TO YOU

sexualviolenceprevention.asu.edu

If you want to talk through where to start, contact the [OFFICE OF ADVOCACY AND ASSISTANCE](#) for private support, and the ASU Victim Advocate for [CONFIDENTIAL SUPPORT](#).



ASUDEAN OF STUDENTS/ STUDENT RIGHTS AND RESPONSIBILITIES (SRR)

If student alleged to have violated policy

Support resources, and information about [STUDENT ADVOCACY AND ASSISTANCE](#) and how to file a formal Title IX complaint are provided

Information on how to pursue criminal charges through [ASU POLICE OR LOCAL POLICE](#) will be provided

As needed, interim measures are implemented. These may include academic adjustments, room re-assignment, no contact orders and counseling

Investigation includes interviews and collection of relevant evidence

Responsibility and appropriate sanctions are determined. If expulsion or suspension is decided, both parties have the right to appeal

Report can be made in addition to reporting to the police

OFFICE OF UNIVERSITY RIGHTS AND RESPONSIBILITIES

If faculty or staff alleged to have violated policy

Support resources, information about Employee Assistance Office and how to file a formal complaint are provided

Information on how to pursue criminal charges through [ASU POLICE OR LOCAL POLICE](#) will be provided

As needed, interim measures are implemented. These may include changes in assignments, no contact orders and counseling

Investigation includes interviews and collection of relevant evidence

A report will be prepared documented factual findings for ASU executive designee who will accept or reject findings and issue final decision to both parties

Report can be made in addition to reporting to the police.

FILE A TITLE IX FORMAL COMPLAINT

Where to file?
You can file your written document with your signature at TitleIXCoordinator@asu.edu or request an appointment with the Title IX Coordinator in person by emailing the above address.

What happens?
You will be contacted to verify your intent to file a Title IX Formal Complaint. **The Respondent* is notified of the complaint** and each party has the opportunity to provide any information for review. Each party has the right to review any and all documents. There will be a live hearing. Each party has the right to appeal.

What if I only want resources?
Resources are available with or without a Title IX Formal Complaint. For students, please contact [STUDENT ADVOCACY AND ASSISTANCE](#).

CRIMINAL REPORTING PROCESS

Dial 911 in the event of an emergency or call the non-emergency number to report. If the incident occurred on ASU's property, ASU Police will respond. The ASU Police will connect you with a Victim Advocate if requested or depending on the incident being reported

If the event occurred off-campus, connect with the police department in the city where the incident occurred. Depending on the city you are reporting with a victim advocate may be available for support. However, you can still follow-up with the ASU Victim Advocates for additional support and resources.

The investigation may include an interview, witness statements, and evidence collection. You will also be asked if you'd like to have a Medical Forensic Exam done if the incident was reported within a five-day period or 120 hours.

REPORT TO ASU HOTLINE

Anonymous report is sent to appropriate office

Office conducts fact finding investigation

File is closed if no basis is found for complaint

→ If basis is found for complaint, [SRR](#) or [URR](#) process is followed depending on affiliation of parties

Updates on submitted hotline reports are available online or by phone

Note: Anonymous reporting will limit the ability for an investigation

Title IX of the Education Amendments of 1972 protects individuals from discrimination based on sex in any educational program or activity operated by recipients of federal financial assistance. As required by Title IX, ASU does not discriminate on the basis of sex in the education programs or activities that we operate, including in admission and employment. Inquiries concerning the application of Title IX may be referred to the Title IX Coordinator or to the U.S. Department of Education, Assistant Secretary, or both.

IF AN INCIDENT OF SEXUAL MISCONDUCT/SEXUAL VIOLENCE OCCURS

THE FOLLOWING OPTIONS AND RESOURCES ARE AVAILABLE TO YOU

sexualviolenceprevention.asu.edu



ASU COUNSELING	EMPACT'S CRISISLINE 24/7	EMPLOYEE ASSISTANCE OFFICE	ASU VICTIM ADVOCATE	MYPLAN APP
Mental health support, group counseling, and referrals	480-921-1006 ASU's dedicated Crisis Line	Support for professional staff and faculty	Support, reporting options and resources	Intimate Partner Violence safety planning



911	ASU HEALTH SERVICES (CONFIDENTIAL)	MEDICAL FORENSIC EXAM	
Medical help in the case of an emergency	Follow-up medical care (forensic exams not offered)	Police Report Follow-up care and evidence collection following an assault. Police will schedule the exam, which will be done off-campus, at a Family Advocacy Center (Maricopa County).	VAWA Exam- Non Report Medical Forensic Exam without reporting to the police. Call 480-312-6339 to schedule an exam, which will be done at a Family Advocacy Center.



ASU STUDENT ADVOCACY AND ASSISTANCE	ASU SUN DEVIL SUPPORT NETWORK	TITLE IX COORDINATOR	ASU VICTIM ADVOCATE (CONFIDENTIAL)
An explanation of all available options and resources will be provided	Speak with a peer about your options	Discuss options for reporting	Support, reporting options and resources



SUICIDE PREVENTION LIFELINE	TREVOR LIFELINE	TRANS LIFELINE	RAINN	THE HOTLINE
Crisis support and resources 1-800-273-TALK	LGBTQ Crisis Support 1-866-488-7386	Trans Peer Support 1-877-565-8860	National Sexual Assault Hotline 1-800-656-HOPE	National Domestic Violence Hotline 1-800-799-SAFE

ASU is committed to your health and safety. In the case of sexual misconduct/sexual violence, please use the following resources and services. For more information, visit sexualviolenceprevention.asu.edu.

Police

In case of emergency	911
ASU Police.....	480-965-3456
Glendale Police Department.....	623-930-3000
Lake Havasu Police Department.....	928-855-4111
Mesa Police Department.....	480-644-2030
Phoenix Police Department.....	602-262-7626
Tempe Police Department.....	480-350-8311

ASU Victim Advocate (Confidential)**

cfo.asu.edu/victim-services

All ASU Locations.....	480-965-0107
------------------------	--------------

Safety Escort Services

24/7 safety escort service between campus buildings, residence halls and parking facilities.

Downtown Phoenix.....	602-496-3456
Polytechnic.....	480-727-3456
Tempe.....	480-965-1515
West.....	602-543-3456

Please note: In some cases, you will be connected to ASU Police for safety escort services.

Employee Assistance Office

cfo.asu.edu/hr-eao

All ASU Locations.....	480-965-2271
------------------------	--------------

ASU Counseling Services (Confidential)

students.asu.edu/counseling

All ASU Locations.....	480-965-6146
EMPACT ASU's dedicated crisis line (After Hours).....	480-921-1006

ASU Health Services (Confidential)

eoss.asu.edu/health

Downtown Phoenix.....	602-496-0721
Polytechnic.....	480-727-1500
Tempe.....	480-965-3349
West.....	602-543-8019
After Hours.....	800-293-5775

Private resources are mandatory reporters but will only share information with other offices involved in sexual violence response. Confidential resources do not have a reporting responsibility and will not share information without your consent. Both Private and Confidential resources must act in a situation where there is an immediate threat to the health and safety of an individual or the community.

Dean of Students (DOS)

eoss.asu.edu/dos

The Dean of Students office can connect you to both Student Advocacy and Assistance, and Student Rights and Responsibilities (SRR). Student Advocacy and Assistance will provide resources, and Student Rights and Responsibilities will start an investigation.

Downtown Phoenix.....	602-496-4357
Polytechnic.....	480-727-5269
Tempe.....	480-965-6547
West.....	602-543-8152

For more information on Student Advocacy and Assistance, visit eoss.asu.edu/dos/srr/StudentAdvocacyandAssistance.

For more information on Student Rights and Responsibilities, visit eoss.asu.edu/dos/srr.

Office of University Rights and Responsibilities

urr.asu.edu

Email: urr@asu.edu

Office of University Rights and Responsibilities.....	480-965-5057
---	--------------

Title IX Coordinator and Special Counsel

Email: TitleIXCoordinator@asu.edu

Jodi Preudhomme.....	480-965-0696
----------------------	--------------

The following Title IX Deputy Coordinators are additional student resources

Safali Patel Evans.....	480-965-2200
Deana Garner Smith (for athletics).....	480-965-2146
Director of University Rights and Responsibilities (employee matters).....	480-965-5057

Students can contact any Title IX Deputy Coordinator for assistance.

For more information about Title IX, visit asu.edu/titleIX.

ASU Hotline

Anonymous Reporting: hotline.asu.edu

All ASU Locations.....	877-SUN-DEVL (786-3385)
------------------------	-------------------------

ASU Sun Devil Support Network

eoss.asu.edu/sdsn

Peer support advisors provide information about legal, medical, and psychological resources on and off campus.

National Hotlines

National Sexual Assault Hotline.....800-656-HOPE (4673)
oh.rainn.org/online

The National Domestic Violence Hotline.....800-799-7233
thehotline.org

Suicide Prevention Lifeline.....1-800-273-TALK
suicidepreventionlifeline.org

Trevor LifeLine.....1-866-488-7386
thetrevorproject.org

TransLifeline.....1-877-565-8860
translifeline.org

myPlan App
myplanapp.org

Medical Forensic Exams

Medical Forensic Exams in Maricopa County are conducted by HonorHealth Forensic Nursing Program at Family Advocacy Centers. When reporting to law enforcement, the Medical Forensic Exam will be scheduled on your behalf. If a victim/survivor does not want to report to law enforcement, a Medical Forensic Exam can be scheduled by calling **480-312-6339** (VAWA Exam). Victims/Survivors who participate in a VAWA exam have the option to file a police report at a later date.

Family Advocacy Centers

Medical Forensic Exams are conducted at Family Advocacy Centers in Maricopa County. Please note that these centers are not open 24 hours and should be contacted prior to visiting.

Center Against Family Violence

Mesa.....	480-644-4075
-----------	--------------

Family Advocacy Center

Phoenix.....	602-534-2120
--------------	--------------

Scottsdale Family Advocacy Center

Scottsdale.....	480-312-6340
-----------------	--------------

Glendale Family Advocacy Center

Glendale.....	623-930-3720
---------------	--------------

* Respondent means an individual who has been reported to be the perpetrator of conduct that could constitute sexual harassment. Complainant means an individual who has been impacted by conduct that could constitute sexual harassment, whether or not that person first brought the conduct to the attention of the university.

** The Victim Advocates are a confidential resource and are housed under the ASU Police Department, but are available to meet anywhere on campus.